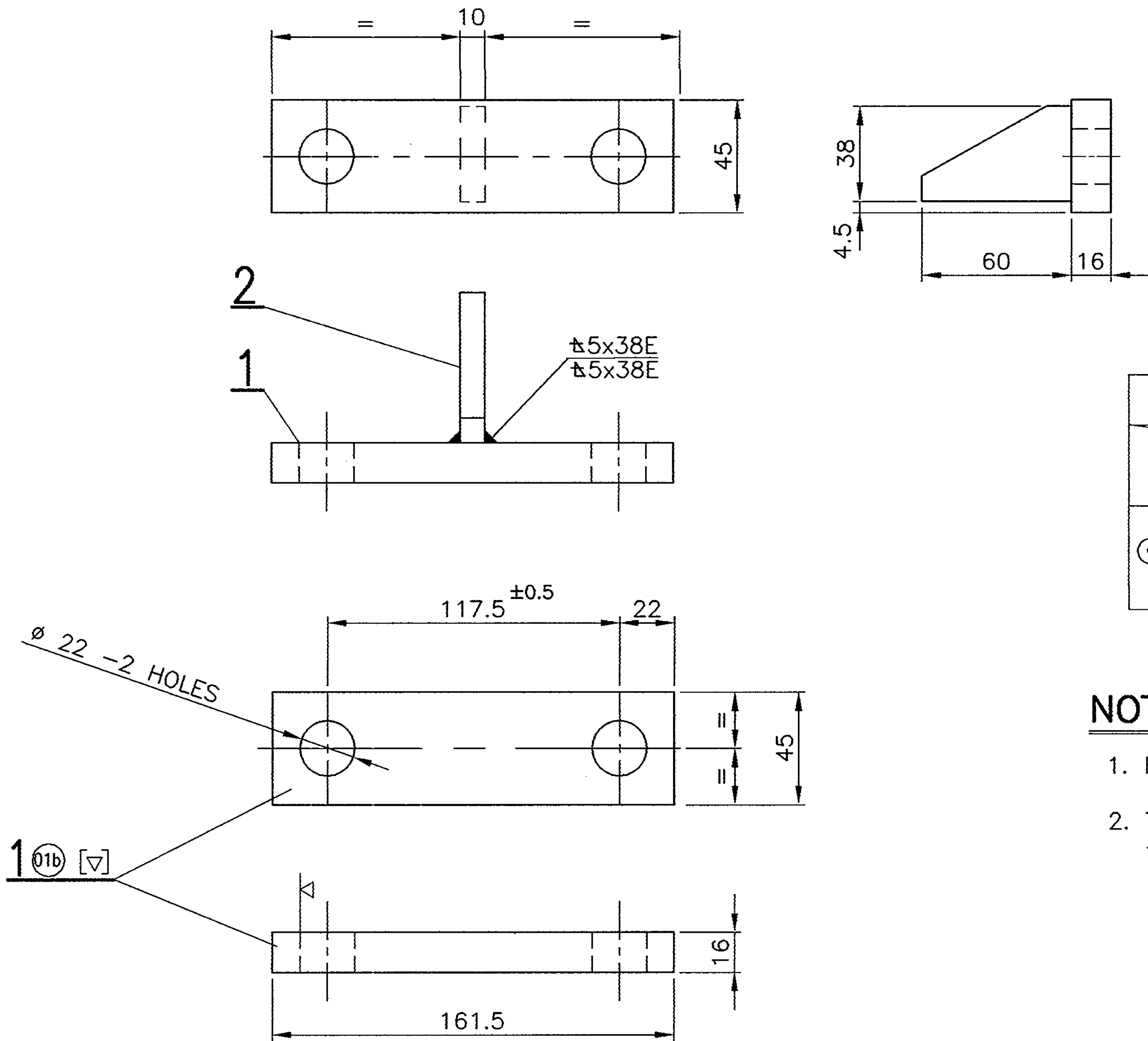


▽ ROUGH MACHINED	① ROUGH CLEANED
▽▽ FINISH MACHINED	⑱ CHAMFERED
▽▽▽ FINE FINISH MACHINED	①b BURRS REMOVED

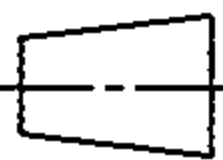

ALTERATIONS



NO. OF ASSEMBLY REQUIRED PER COACH		
TYPE OF COACH	COLS.	
⊙ ALL TYPES OF 20 T BOGIES		8

NOTE:

1. FOR OPEN TOLERANCES REFER DRG.NO.ICF/STD-9-0-001
2. THE FINISHED ASSEMBLY SHALL BE THOROUGHLY CLEANED AND APPLIED WITH TWO COATS OF RED OXIDE ZINC CHROMATE PRIMER TO IS:2074 - 92 TO A DFT MINIMUM 35 MICRONS WITH SMOOTH AND MATT FINISH.

				1	BRACKET		2	EMU/M 0-3-028		0.124 kg	ITEM-1			
				1	BRACKET 16 x 45 x 161.5		1		IS:2062-99 Fe 410 WC	0.817 kg				
				No. OFF		DESCRIPTION & DIMENSIONS		ITEM	REF.DRG	MATL. SPEC.	WEIGHT/UNIT	REMARKS		
				IV	III	II	I	GROUP: (0-3) BOGIE FRAME ARRGT.			SUPERSEDED BY:			
				PER ASSY	BRAKE CYLINDER FIXING BRACKET COMPLETE FOR 20T AXLE BOGIES						SUPERSEDES: DMU/DPC5-0-3-518 ALT -/-			
											SCALE 1:2.5	SSE/D	C. Jambhaskar 14/8	
												CHD	R. Anandam	
												ALT		
												DRN	M. Sabapathynathan	
				ALT										
				CAD FILE: C:\MD-CAD\199\0-3\526---00.DWG						  INTEGRAL COACH FACTORY CHENNAI - 600 038				
				DATA CODE No: 199	INDIAN RAILWAY STANDARDS				SHEET 1 OF 1					
				DMU/DPC ₅ -0-3-526										